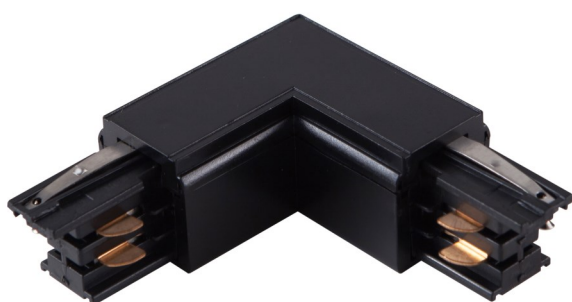


Surface Mount 4 Wire Track Elbow Joiner



Technical Specification

Model	SE-4A-L-Left(Right)-Bk	SE-4A-L-Left(Right)-WH
Input Voltage	AC 240V 50/60Hz	
Description	Three circuit / 90 degree / connect two tracks	
IP Grade	IP 20	
Housing Colour	White / Black	